

ALEA III

Contemporary Music Ensemble in Residence at Boston University since 1979
Theodore Antoniou, *founder*

ALEA Contemporary Guitar Series

Friday, April 19, 2024, at 7:00 PM

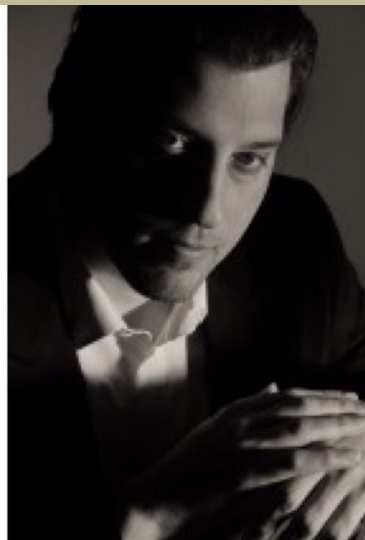
Marsh Chapel – 735 Commonwealth Avenue, Boston, MA

Tickets: \$25:00 - \$15:00 - Free with BU Student ID

Two internationally acclaimed artists unveil an extraordinary evening of 20th and 21st century guitar music, celebrating a cross-genre legacy



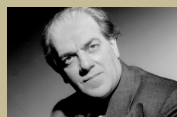
Joaquin Clerch



Tal Hurwitz

12 Études
Adagio from Sonata No. 3
Espiral Eterna, Elogio de la Danza
The Eternal Feminine
Sonata, Op. 47

Heitor Villa Lobos (*Brazil*)
Nikita Koshkin (*Russia*)
Leo Brouwer (*Cuba*)
Apostolos Paraskevas (*Greece*)
Alberto Ginastera (*Argentina*)



<http://www.aleaIII.com>

The Marsh Chapel is located at 735 Commonwealth Avenue, Boston, on the B branch of the MBTA Green Line at Boston University Central stop, and is wheelchair accessible.

For parking info log on <https://www.bu.edu/chapel/about/directions/>